



# Taxonomy and Systematics/Taxonomia e Sistemática

## New species of *Szelenyopria* Fabritius and description of the male of *Szelenyopria distinguenda* (Loiácono) (Hymenoptera: Diapriidae)

Registered on ZooBank: [urn:lsid:zoobank.org:pub:1D9A0606-13BC-40F2-B77F-478BC8154B6A](http://urn:lsid:zoobank.org:pub:1D9A0606-13BC-40F2-B77F-478BC8154B6A)

Emerson Fraga Comério<sup>1✉</sup>, Ana Lígia Santos Oliveira<sup>1</sup>, Nelson Wanderley Periotto<sup>2</sup> & Rogéria Inês Rosa Lara<sup>2</sup>

1. Universidade Estadual Paulista “Júlio de Mesquita Filho” (UNESP), Faculdade de Ciências Agrárias e Veterinárias, Programa de Pós-graduação em Agronomia (Entomologia Agrícola). 2. Instituto Biológico, Ribeirão Preto.

### EntomoBrasilis 12 (3): 141-148 (2019)

**Abstract.** Here are described and illustrated *Szelenyopria loiaconae* sp. nov., *Szelenyopria jataiensis* sp. nov., and the male of *Szelenyopria distinguenda* (Loiácono) (Hymenoptera, Diapriidae).

**Keywords:** Atlantic Rainforest; Brazilian savannah; Diapriini; parasitoid.

### Novas espécies de *Szelenyopria* Fabritius e descrição do macho de *Szelenyopria distinguenda* (Loiácono) (Hymenoptera: Diapriidae)

**Resumo.** Neste estudo, são descritas e ilustradas *Szelenyopria loiaconae* sp. nov., *Szelenyopria jataiensis* sp. nov., e o macho de *Szelenyopria distinguenda* (Loiácono) (Hymenoptera, Diapriidae).

**Palavras-Chave:** Floresta Atlântica; Cerrado; Diapriini; parasitoide.

Diapriini is the only tribe of Diapriinae that includes truly symphilic species, some of them are adapted morphologically to life with ants. These adaptations include extensive mimicry of the host ants and may include convergences in sculpture, pilosity, color, behavior and biology (MASNER & GARCIA 2002; LACHAUD & PÉREZ-LACHAUD 2012; LOIÁCONO *et al.* 2013a).

The 11 described Neotropical *Szelenyopria* Fabritius species are distributed from Argentina to Guatemala (MASNER & GARCÍA 2002; FABRITIUS 1974; LOIÁCONO 1987; LOIÁCONO & MARGARÍA, 2000; LOIÁCONO *et al.* 2000; LOIÁCONO & MARGARÍA 2009; LOIÁCONO *et al.* 2013b).

Species of *Szelenyopria* share the presence of straight setae with truncate apex on the body which might be used as an outlet of possible exocrine gland products (MASNER & GARCÍA 2002). *Szelenyopria* species are solitary or gregarious primary endoparasitoids of Formicidae larvae (LOIÁCONO 1987; LOIÁCONO *et al.* 2000; LOIÁCONO & MARGARÍA 2009; LOIÁCONO *et al.* 2013b).

Here we describe and illustrate two new species of *Szelenyopria* from southeast of Brazil, *Szelenyopria loiaconae* sp. nov. and

*Szelenyopria jataiensis* sp. nov., and we provide a description and images of diagnostic characters for the male of *Szelenyopria distinguenda* (Loiácono), previously known only by females.

### MATERIAL AND METHODS

The hymenopterans were collected in one area of Atlantic Rainforest at Parque Estadual da Serra do Mar, Núcleo Santa Virgínia, São Luiz do Paraitinga municipality, using five Malaise traps (TOWNES 1972), and in areas of Brazilian savannah, including areas of riparian and savannah woodland vegetations, at Estação Ecológica de Jataí, Luiz Antonio municipality, using five yellow pan traps and Malaise traps (TOWNES 1972), all of them at São Paulo State, Brazil.

Specimens for the present study were dried using a Critical Point Drier (Leica EM CPD30). Morphological structures were visualized and studied using a Leica MZ 9.5 stereomicroscope with a fluorescent light source. Bright field images were taken with a Leica DFC295 digital camera attached to a Leica M205C APO stereomicroscope equipped with LED5000 HDI light source. Image stacking was performed with Helicon Focus software (version 5.3). Scanning electronic micrographs (SEMs) were taken with a FEI Quanta TM 250 SEM, using low vacuum

#### Edited by:

William Costa Rodrigues

#### Article History:

Received: 17.vii.2019

Accepted: 09.ix.2019

#### ✉ Corresponding author:

Emerson Fraga Comério

✉ [emersoncomerio@hotmail.com](mailto:emersoncomerio@hotmail.com)

📄 No ORCID record

#### Funding agencies:

↪ Instituto Nacional de Ciência e Tecnologia dos Hymenoptera Parasitoides da Região Sudeste Brasileira (Hympar/Sudeste – CNPq/Fapesp/Capes)

mode. Images were further enhanced with Adobe Photoshop (version 11.0).

Morphological terminology follows MASNER & GARCIA (2002) and EADY (1967). The following abbreviations are in the descriptions: A (antennomere); POL (posterior-ocellar line): distance between the inner margins of lateral ocelli; LOL (lateral-ocellar line): shortest distance between the median ocellus and lateral ocellus; OOL (ocular-ocellar line); shortest distance between the lateral ocellus and the compound eye.

*Szelenyopria distinguenda* was described based only on female specimens. Herein, the male of this species is described from specimens collected at Domingos Martins and Santa Tereza municipalities, Espírito Santo State, Brazil, and deposited in the collection of Hymenoptera of the Universidade Federal do Espírito Santo.

Primary specimens were deposited in the following institutions: MZUSP - Museu de Zoologia da Universidade de São Paulo, São Paulo, Brazil (C.R.F. Brandão, curator); LRRP - Coleção Entomológica do Laboratório de Sistemática e Bioecologia de Predadores e Parasitoides do Instituto Biológico, Ribeirão Preto, Ribeirão Preto, SP, Brazil (N.W. Periotto, curator); UFES - Universidade Federal do Espírito Santo (M.T. Tavares, curator).

## TAXONOMY

### *Szelenyopria loiaconae* Comério, Oliveira, Periotto & Lara sp. nov.

[urn:lsid:zoobank.org:act:AA03DB47-887C-4079-A437-0CB6DD2F7FE0](http://urn:lsid:zoobank.org:act:AA03DB47-887C-4079-A437-0CB6DD2F7FE0)

(Figures 1-9)

**Diagnosis.** *Szelenyopria loiaconae* sp. nov. and *S. jataiensis* sp. nov. differs from all other *Szelenyopria* species by the presence of 12 antennomeres. The other 11 species have 11 antennomeres. *S. loiaconae* sp. nov. differs from *S. jataiensis* sp. nov. in having a pronounced clava, presence of glabrous median keel of propodeum that is not produced anteriorly in dorsal

view, weakly developed dorsellum without carinae, and by the presence of rare pilosity on gena, pronotal collar, metapleuron and petiole.

**Holotype female.** (Figure 1). Length 2.3 mm; body mostly dark brown; antenna, tegula, ocelli and legs light brown; body smooth and shiny, with sparse specialized setae.

**Head.** subrectangular in dorsal view (Figure 2) 1.5 × wider than long, with sparse pilosity; frons unarmed, antennal shelf protruding; temple in lateral view 1.4 × wider than compound eye, POL:LOL:OOL= 8.0:7.3:14.7. In lateral view (Figure 3), antennae inserted at the level of the upper half of the compound eye; compound eye small, ovoid, 1.5 × higher than wide in lateral view, with sparse pilosity; ocelli diameter 3.7 × longer than a ommatidium diameter; malar space as long as the compound eye height in lateral view; gena with sparse pilosity. Occipital flange rudimentary, mandible bidentate, lower tooth longer than the upper tooth; palpal formula 5:2; antenna with 12 antennomeres. A1 long and cylindrical, A1–A5 and A12 2.8, 1.8, 1.6, 1.3, 1.3 and 1.2 × longer than wide respectively, A6–A11 0.9, 0.9, 0.5, 0.5, 0.5 and 0.5 × wider than long respectively; clava distinct, with F8–F11 rectangular and flattened ventrally, and a subconical F12.

**Mesosoma** (Figures 5-7). Subequal to width of head at level of tegulae; pronotal collar with rare and sparse pilosity; mesoscutum convex with sparse long pilosity; anterior scutellar pit rectangular, deep, transverse, without median carina; mesoscutellar disc convex; axilla wider than scutellar pit; dorsellum underdeveloped, without carinae; propodeum rugulose and pilose (Figure 7), with posterolateral corners triangular and posterior margin deeply concave medially, median keel of propodeum not sculptured and not produced anteriorly in dorsal view; mesopleuron convex with shallow medial depression (Figure 6); metapleuron with sparse pilosity; fore wing 2.6 × longer than wide, submarginal vein reaching proximal third of wing length, stigmal vein moderately developed; hind wing narrow, 7.1 × as long as wide; legs with dense and long pilosity.

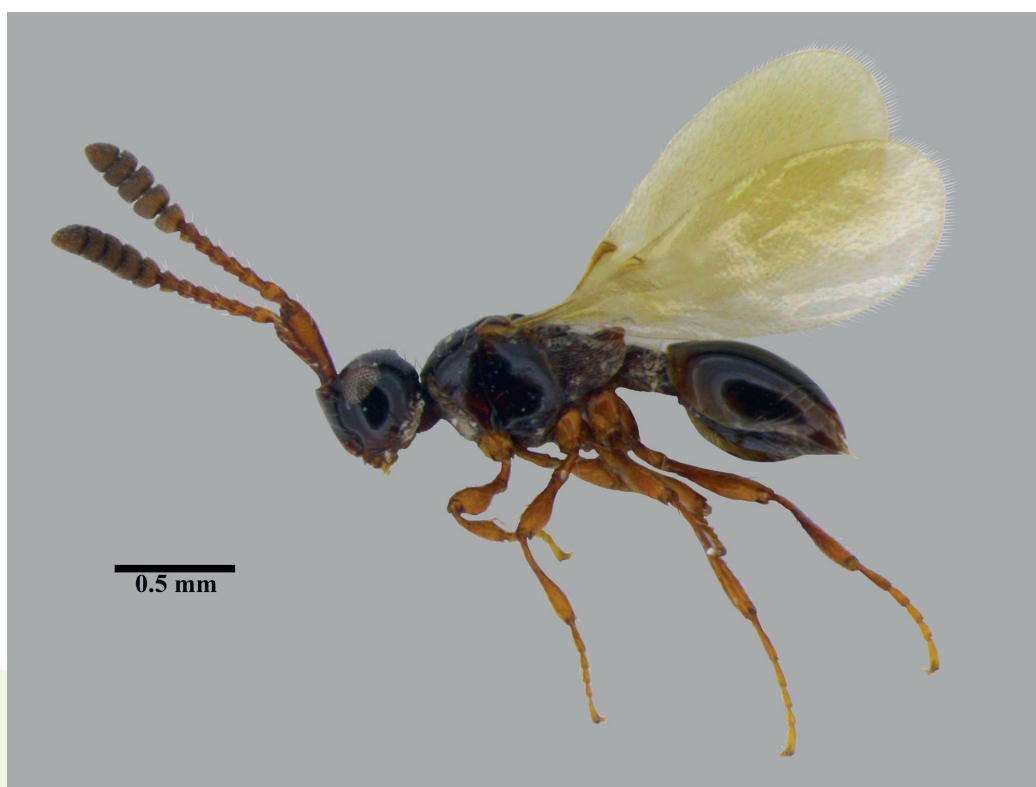


Figure 1. *Szelenyopria loiaconoae* sp. nov. Female. Habitus.

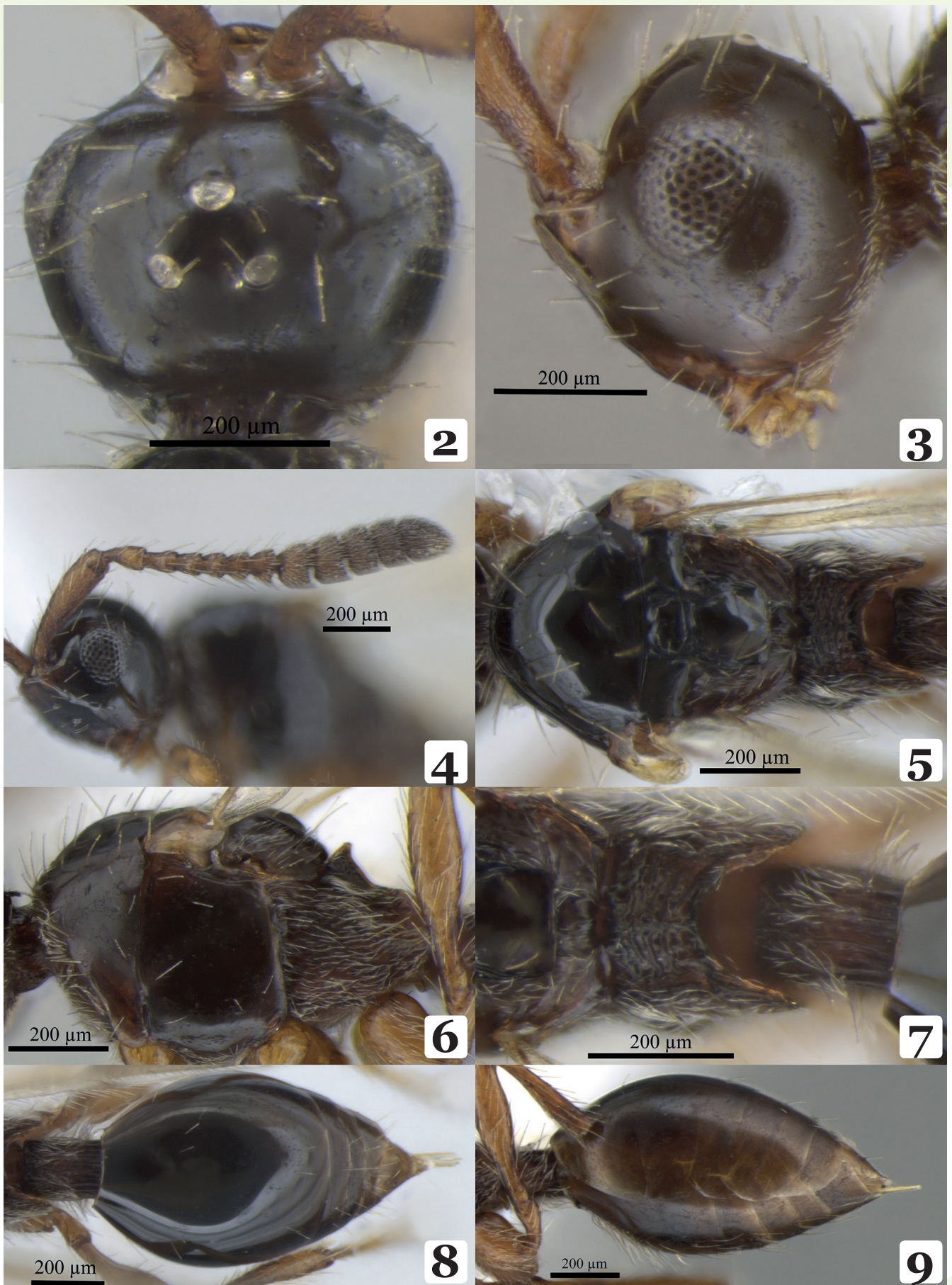


Figure 2. *Szelenyiopria loiaconoae* sp. nov. Head, dorsal view.  
 Figure 3. *Szelenyiopria loiaconoae* sp. nov. Head, lateral view.  
 Figure 4. *Szelenyiopria loiaconoae* sp. nov. Antenna, female.  
 Figure 5. *Szelenyiopria loiaconoae* sp. nov. Mesosoma, dorsal view.  
 Figure 6. *Szelenyiopria loiaconoae* sp. nov. Mesosoma, lateral view.  
 Figure 7. *Szelenyiopria loiaconoae* sp. nov. Propodeum, dorsal view.  
 Figure 8. *Szelenyiopria loiaconoae* sp. nov. Metasoma, dorsal view.  
 Figure 9. *Szelenyiopria loiaconoae* sp. nov. Metasoma, lateral view.

*Metasoma*. Petiole as long as wide, rugulose, covered anteriorly by long whitish hairs; gaster about  $1.9 \times$  longer than wide (Figure 8), with many long bristles ventrally (Figure 9).

**Variations.** N=5 specimens. Variation in measures: body length (2.1–2.4 mm); POL (7.7–8.2); OOL (6.9–7.3); LOL (14.7–14.9); malar space (1.8–2.0); A1(35.9–36.4 / 9.0–10.6), A2 (12.8–13.1 / 6.8–7.6), A3 (8.6–9.8 / 5.7–6.2), A4 (7.2–7.4 / 5.8–6.2), A5 (8.2–9.0 / 6.7–7.3), A6 (6.7–7.2 / 6.9–7.2), A7 (7.4–8.2 / 7.9–8.4), A8 (7.0–7.4 / 12.8–13.7), A9 (7.9–8.3 / 14.8–15.5), A10 (6.9–7.5 / 14.9–15.3), A11 (6.9–7.5 / 14.1–15.0) and A12 (12.8–13.2 / 10.8–11.3); forewing (1.7–1.8 / 0.6–0.7); submarginal vein length (0.5–0.6); petiole length (1.8–1.9 / 1.7–1.8), and gaster length (9.4–9.9 / 5.0–5.8).

**Material examined:** (n=5): HOLOTYPE female. BRAZIL / S[ão] P[aulo], São Luiz do Paraitinga, P[arque] E[stadual] [da] S[erra] [do] M[ar] – Núcleo Santa Virgínia, 23°19'24.8" S/45°05'40.1" W, Malaise trap, 21.XII.2010. N.W. Perieto and team, legs. (MZUSP). PARATYPES: 4 females. Same data as holotype, except 23.XI.2009, 22.I.2010 (LRRP) and 22.VII.2010 and 22.X.2010. (MZUSP).

**Male.** Unknown.

**Distribution.** São Paulo State, Brazil.

**Biology:** Unknown.

**Etymology.** This species is named in honor of Dra. Marta Susana Loiacono, entomologist at the División Entomología, Facultad de Ciencias Naturales y Museo, Universidad Nacional de La Plata, La Plata, Argentina, by her dedication towards Neotropical Diapriidae taxonomy and bionomy.

***Szelenyopria jataiensis* Comério, Oliveira, Perieto & Lara sp. nov.**

[urn:lsid:zoobank.org:act:31D63324-05A4-4832-BD81-4A021DF72E38](https://doi.org/10.3896/BI.2019.54.1.1)

(Figures 10–18)

**Diagnosis.** *S. jataiensis* sp. nov. differs from all other species in the genus by the combination of the following characters: antennae with 12 antennomeres clava strongly abrupt of 3 antennomeres not flattened ventrally, median keel of propodeum sculptured posteriorly in dorsal view and submarginal vein reaching proximal fourth of wing length.

**Holotype female.** (Figure 10). Length 2.4 mm, body predominantly dark brown; antenna, tegula, ocelli and legs light brown; body smooth and shiny, with sparse specialized setae.

**Head.** In dorsal view (Figure 11), subrectangular,  $1.3 \times$  wider than long, with sparse pilosity; frons unarmed, antennal shelf protruding; temple  $1.3 \times$  wider than eye; POL:LOL:OOL=11.1:7.7:15.9. In lateral view (Figure 12), antennae inserted at the level of the upper half of compound eye; compound eye conspicuous, glabrous, ovoid,  $1.4 \times$  higher than wider; ocellus  $3.5 \times$  larger than ommatidium; compound eye  $2.1 \times$  malar space; gena with dense pilosity; occipital flange rudimentary. In frontal view, with mandible bidentate, lower tooth slightly longer than the upper; palpal formula 5:2. Antenna (Figure 13) with 12 antennomeres; A1 elongate and cylindrical, A1–A9 and A12  $4.6, 1.8, 2.0, 2.1, 1.7, 1.9, 1.5, 1.1, 1.3$  and  $1.2 \times$  longer than wide respectively, A10 and A11  $0.8 \times$  wider than long respectively; clava strongly abrupt, with two subrectangular clavomeres, and one apical segment subconical, not flattened ventrally.

**Mesosoma.** In dorsal view (Figure 14), subequal to width of head at level of tegulae; pronotal collar with dense pilosity; mesoescutum convex with long setae; anterior scutellar pit subcircular, deep, transverse, without median carina; scutellar disc convex, axilla wider than scutellar pit; dorsellum well developed, with three keels; propodeum developed with dense pilosity (Figure 16); median keel of propodeum sculptured posteriorly in dorsal view; posterolateral corners of propodeum strongly produced, posterior margin deeply excavated medially; mesopleuron convex with a shallow medial depression (Figure 15); metapleuron with dense pilosity; forewing  $3.0 \times$  longer than wide, submarginal vein reaching proximal fourth of wing length, stigmal vein developed; hind wing narrow,  $7.0 \times$  longer than wide; legs with distinct long pilosity.

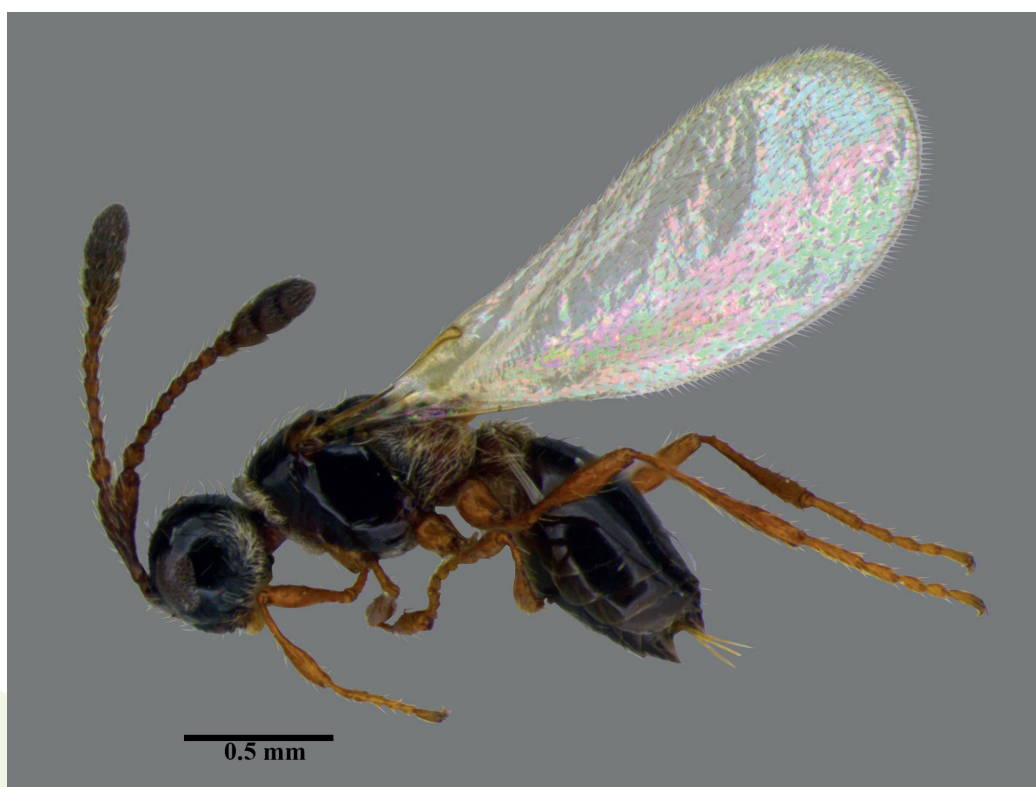


Figure 10. *Szelenyopria jataiensis* sp. nov. Female. Habitus.

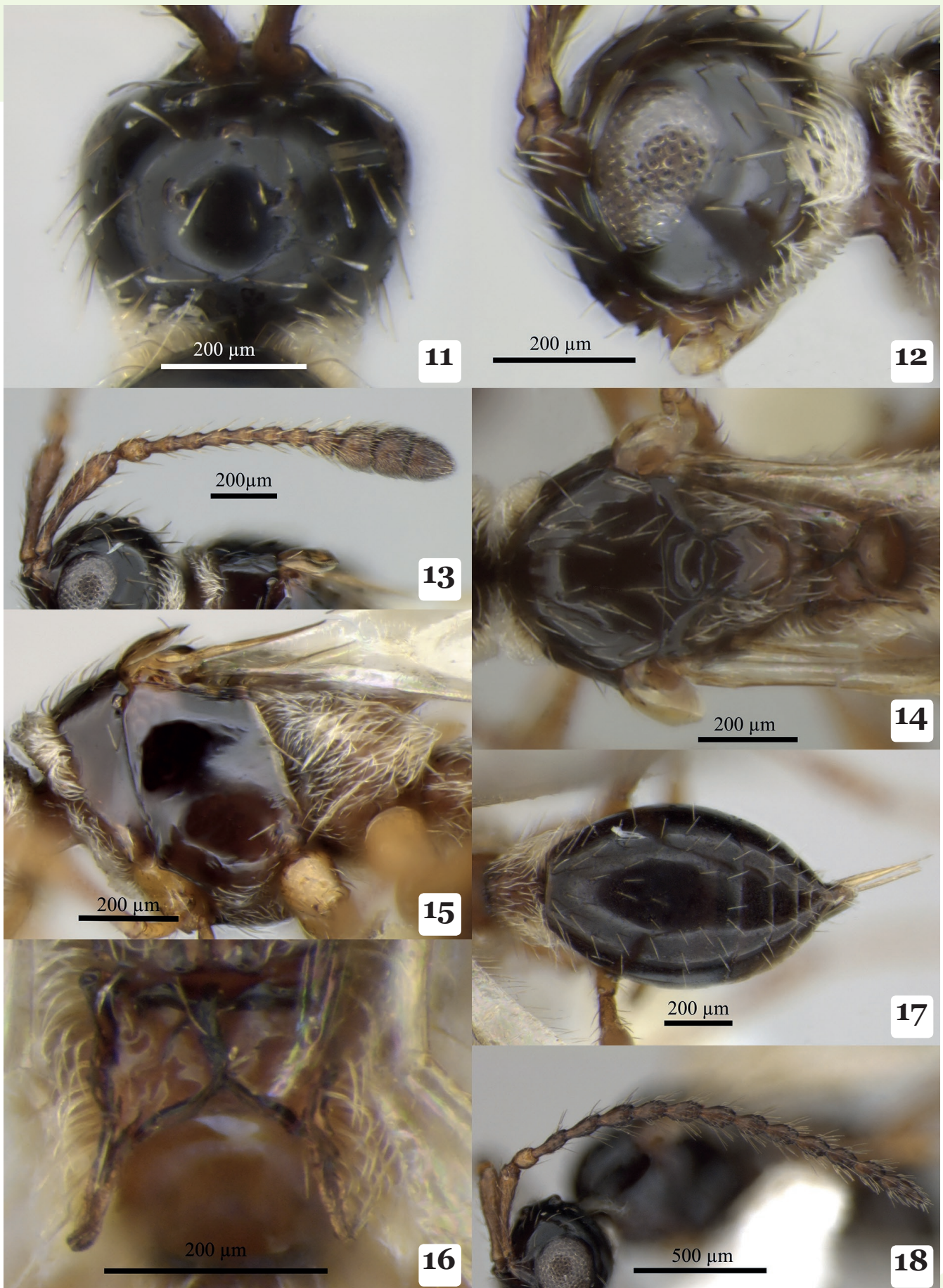


Figure 11. *Szelenyiopria jataiensis* sp. nov. Head, dorsal view.  
 Figure 12. *Szelenyiopria jataiensis* sp. nov. Head, lateral view.  
 Figure 13. *Szelenyiopria jataiensis* sp. nov. Antenna, female.  
 Figure 14. *Szelenyiopria jataiensis* sp. nov. Mesosoma, dorsal view.  
 Figure 15. *Szelenyiopria jataiensis* sp. nov. Mesosoma, lateral view.  
 Figure 16. *Szelenyiopria jataiensis* sp. nov. Propodeum, dorsal view.  
 Figure 17. *Szelenyiopria jataiensis* sp. nov. Metasoma, dorsal view.  
 Figure 18. *Szelenyiopria jataiensis* sp. nov. Antennal segments, male.

*Metasoma*. Petiole almost as long as wide (18.0:19.2), covered by long whitish hairs; metasoma post petiole, in dorsal view (Figure 17), about 1.6 × longer than wide, with sparse specialized setae; ovipositor partially exposed.

**Variations.** N= 4 exemplars. Variation in measures: body length (2.3–2.4 mm); POL (10.6–11.6); OOL (6.9–7.7); LOL (14.3–17.7); malar space (6.5–11.2); A1(36.9–40.3 / 8.7–9.38), A2 (10.7–11.8/ 6.1–6.6), A3 (8.4–10.1 / 4.2–4.9), A4 (8.5–8.8 / 4.1–5.1), A5 (7.3–8.0 / 4.4–6.4), A6 (7.5–8.2 / 4.4–6.0), A7 (7.8–10.0 / 5.2–5.4), A8 (5.7–7.0 / 5.3–6.1), A9 (7.0–9.2 / 6.6–7.1), A10 (8.4–9.5 / 11.0–11.5), A11 (9.5–10.0/ 12.5–13.1) and A12 (12.7–12.9 / 10.9–11.1); forewing (2.3–2.4 / 0.8–0.9); submarginal vein length (0.7–0.9); petiole (1.7–1.8 / 1.8–1.9), and metasoma post petiole (9.4–9.7 / 5.2–5.5).

**Male.** Antenna (Figure 18) 14-segmented, A3–A13 distally knotted, with row of verticillate bristles; antennomeres in proportions: A1 (40:10), A2 (12:9), A3 (20:8), A4 (19:9), A5 (18:9), A6 (16:9), A7 (16:9), A8 (15:8), A9 (15:8), A10 (14:9), A11 (14:8), A12 (12:8), A13 (12:9) and (16:9).

**Material examined:** (n=7): HOLOTYPE female. BRAZIL / S[ão] P[aulo], Luiz Antonio, E[stação] E[cológica] [do] J[ataí] 21°37'23.0"S/47°48'33.9"W, yellowpan trap, riparian vegetation, 22.VIII.2008. N.W. Perioto and team. (MZUSP). PARATYPES: 1 female, same data as holotype, except Malaise trap, 16.VII.2007. (MZSP). 1 female, same data as holotype, except Malaise trap, savannah woodland vegetation, 30.IX.2009. (LSBPP); 1 male, same data as holotype, except Malaise trap, savannah woodland vegetation, 22.VIII.2008. (MZUSP); 3 males, same data as holotype, except Malaise trap, brazilian savannah, 13.VIII.2008, 3.IX.2008 (MZSP). 3.IX.2008. (LRRP).

**Distribution.** São Paulo State, Brazil.

**Etymology.** The specific name refers to the type locality.

**Biology.** Unknown.

**Comments.** This species differs from other species of *Szelenyiopria* by number of antennomeres (12). This is species is similar to *S. loiaconae* sp. nov., both have antennae with 12 segments, but differs by the: form of the clava, form of median keel of propodeum, and of the dorsellum; pilosity, and ratio of the vein submarginal.

### *Szelenyiopria distinguenda* (Loiácono)

(Figures 19–21)

*Gymnopria distinguenda* (Loiácono, 2000), *Insect, Systematic & Evolution*, 2, 187–2000.

**Male description.** (Figures 19–20). Length 3.0 mm; body dark brown; antenna, tegula, ocelli and legs mostly light brown; body smooth and shiny, with sparse specialized setae.

**Head.** In dorsal view, globular, 0.8 × wider than long, with sparse pilosity; frons unarmed, antennal shelf protruding; temple 1.8 × wider than compound eye, rounded, POL:LOL:OOL= 8.4:6.9:12.2. In lateral view, with torulus in the lower half of the compound eye; compound eye well developed, ovoid, glabrous, 1.2 × higher than wider; ocellus conspicuous, about 4.0 × the ommatidium diameter; compound eye 2.6 × malar space; gena with dense pilosity; occipital flange rudimentary. In frontal view, mandible bidentate, lower tooth slightly longer than upper tooth; palpal formula 5:2. Antenna with 14 antennomeres, A3–A13 knotted distally, with row of verticillate bristles; A1 elongate and cylindrical, A1–A14 4.6, 2.6, 2.8, 2.6, 2.4, 2.9, 2.5, 2.4, 2.6, 2.5, 2.2, 2.5, 2.6 and 4.5 × longer than wide.

**Mesosoma.** In dorsal view (Figure 21), subequal to width of head at level of tegulae; pronotal collar with dense pilosity; mesoscutum remarkably convex, with sparse setae; anterior scutellar pit subcircular, deep, transverse, laterally striate and with median carina; scutellar disc remarkably convex, axilla smaller than scutellar pit; dorsellum well developed, with three keels; propodeum developed with dense pilosity, median keel of propodeum ligulate, sculptured in dorsal view; posterolateral corners of propodeum developed; posterior margin deeply excavated medially; mesopleuron convex; metapleuron with dense pilosity; fore wing 1.9 × longer than wide, submarginal vein reaching proximal third of wing length, stigmal vein developed; hind wing narrow, 8.5 × longer than wide; legs with many long setae.

**Metasoma.** Petiole as longer than wide; metasoma post petiole, in dorsal view, about 2.0 × longer than wide, with sparse specialized setae.

**Material examined:** 2 male. BRAZIL / E[spírito] S[anto], Domingos Martins, M[ata] P[ico] E[l dorado], 20°22'17"S/40°39'29"W", Malaise trap, 03.XII.2004. Tavares and team (UFES). 1 male, BRAZIL / E[spírito] S[anto], Santa Tereza, E[stação] E[cológica] S[anta] L[úcia], 19°58'25" S/40°31'44.6" W, Pitfall, 23.X.2007. Tavares and team. (UFES).

**Comments.** The association of male and female of *S. distinguenda* is based in combination of the following features, which distinguish the species: mesoscutum and scutellar disc

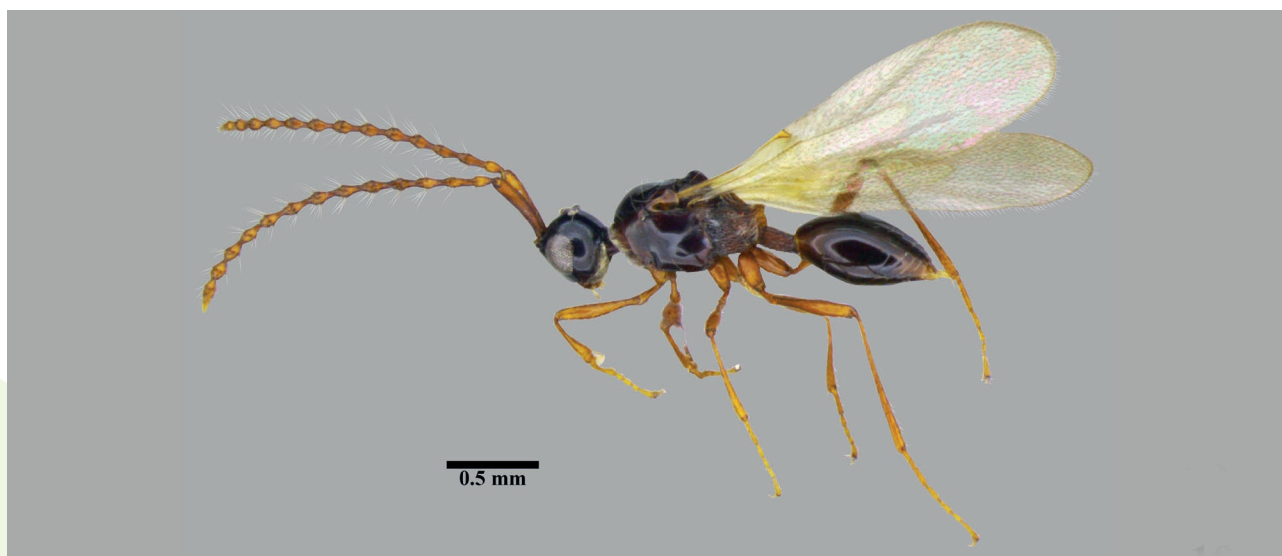


Figure 19. *Szelenyiopria distinguenda* (Loiácono). Male. Habitus, lateral view.

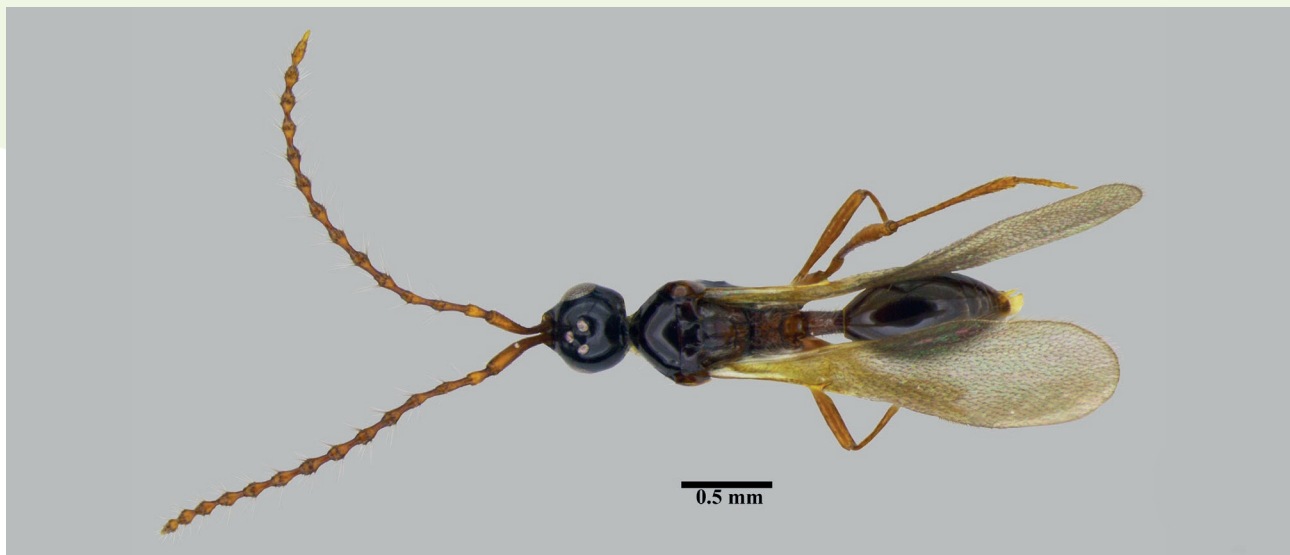


Figure 20. *Szelenyiopria distinguenda* (Loiácono). Male. Habitus, dorsal view.

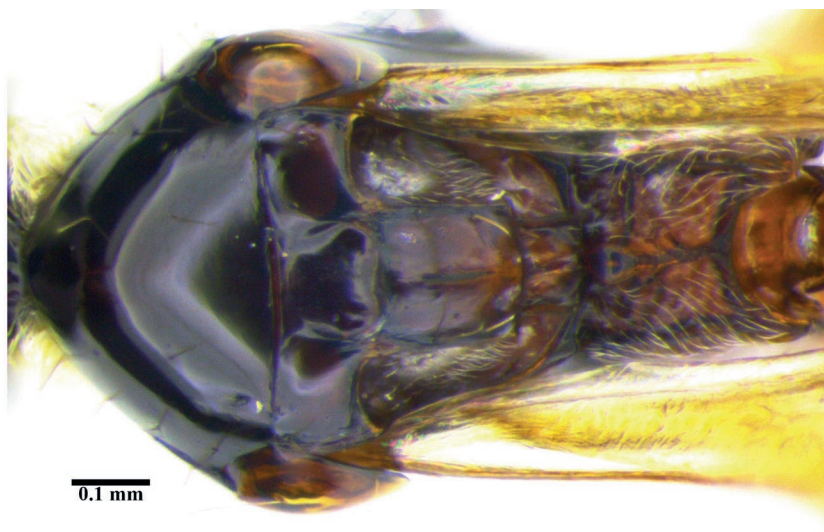


Figure 21. Mesosoma and propodeum of *Szelenyiopria distinguenda* (Loiácono), male.

remarkably convex, anterior half of median keel of propodeum ligulate and sculptured.

**Distribution.** Espírito Santo State, Brazil.

**Biology.** Unknown.

### DISCUSSION

The following features are firstly reported to the genus *Szelenyiopria*: head subrectangular, clava with five clavomeres, clava strongly abrupt and not flattened ventrally and dorsellum weakly developed without median keels.

### ACKNOWLEDGEMENTS

We are grateful to Dr. Lubomir Masner (Agriculture and Agri-Food Canada, Ottawa, Canada) and Dra. Marta Susana Loiácono (División Entomología, Facultad de Ciencias Naturales y Museo, Universidad Nacional de La Plata, La Plata, Argentina) for their kind help in many ways during the study, and to Instituto Nacional de Ciência e Tecnologia dos Hymenoptera Parasitoides da Região Sudeste Brasileira (Hympar/Sudeste – CNPq/Fapesp/Capes) for the financial support.

### REFERENCES

Eady, RD, 1967. Some illustrations of microsculpture in the Hymenoptera. Proceedings of the Royal Entomological

Society, 42: 66-72. DOI: <https://doi.org/10.1111/j.1365-3032.1968.tb01029.x>.

Fabritius, K, 1974. Die Gattung *Doliopria* Kieffer 1910 und nebenstehende Gattungen (Hymenoptera: Diapriidae). Folia Entomologica Hungarica, 27: 53-57.

Lachaud, JP & G Pérez-Lachaud, 2012. Diversity of species and behavior of hymenopteran parasitoids of ants: a review. Psyche: A Journal of Entomology, ID 134746, 24 pp. DOI: <https://doi.org/10.1155/2012/134746>.

Loiácono, MS, 1987. Un nuevo diáprido (Hymenoptera) parasitoide de larvas de *Acromyrmex ambiguus* (Emery) (Hymenoptera: Formicidae) en el Uruguay. Revista de la Sociedad Entomológica de Argentina, 44: 129-136.

Loiácono, M & C Margaría, 2000. Systematic and cladistic analysis of the myrmecophilic genus *Gymnopria* Loiácono (Hymenoptera: Diapriidae). Insect, Systematic & Evolution, 31: 187-200. DOI: <https://doi.org/10.1163/187631200x00381>.

Loiácono, M & C Margaría, 2009. A note on *Szelenyiopria pampeana* (Loiácono) n. comb., parasitoid wasps (Hymenoptera: Diapriidae) attacking fungus growing ant, *Acromyrmex lobicornis* Emery (Hymenoptera: Formicidae: Attini) in La Pampa, Argentina. Zootaxa, 2105: 63-65. DOI: <https://doi.org/10.11646/zootaxa.2105.1.5>.

Loiácono, MS, CB Margaría & D Aquino, 2013a. Diapriinae wasps (Hymenoptera: Diaprioidea: Diapriidae) associated with ants (Hymenoptera: Formicidae) in Argentina. Psyche: A Journal of Entomology, 2013: 1-11. DOI: <https://doi.org/10.1155/2013/320590>.

Loiácono, MS, C Margaría, EM Quiran & BM Corro Molas, 2000. Diápridos (Hymenoptera) parasitoides de larvas de la hormiga cortadora *Acromyrmex lobicornis* (Hymenoptera: Formicidae) en la Argentina. *Revista de la Sociedad Entomológica Argentina*, 59: 7-15.

Loiácono, M, C Margaría, DDO Moreira & DA Aquino, 2013b. A new species of *Szelenyiopria* Fabritius (Hymenoptera: Diapriidae), larval parasitoid of *Acromyrmex subterraneus subterraneus* (Forel) (Hymenoptera: Formicidae) from Brazil. *Zootaxa*, 3646: 228-234. DOI: <https://doi.org/10.11646/zootaxa.3646.3.2>.

Masner, L & JL GARCIA, 2002. The genera of Diapriinae (Hymenoptera: Diapriidae) in the New World. *Bulletin American Museum of Natural History*, 268: 1-138. DOI: [https://doi.org/10.1206/0003-0090\(2002\)268<0001:tgodhd>2.0.co;2](https://doi.org/10.1206/0003-0090(2002)268<0001:tgodhd>2.0.co;2).

Townes, HA, 1972. A light-weight Malaise trap. *Entomological News*, 83: 239-247.

\*\*\*\*\*

#### Suggestion citation:

Comério, EF, ALS Oliveira, NW Periotto & RIR Lara, 2019. New species of *Szelenyiopria* Fabritius and description of the male of *Szelenyiopria distinguenda* (Loiácono) (Hymenoptera: Diapriidae). *EntomoBrasilis*, 12 (3): 141-148.

**Available on:** [doi:10.12741/ebrasilis.v12i3.864](https://doi.org/10.12741/ebrasilis.v12i3.864)

